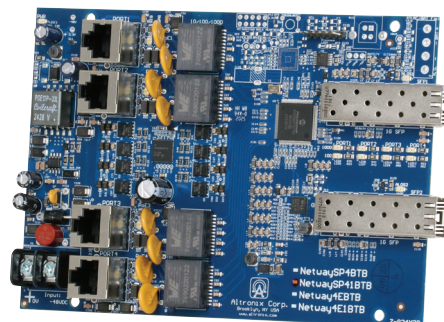


NetWaySP41BTB

4-port Hardened 4PPoE (802.3bt) Switch



Altronix NetWaySP41BTB switch board supports up to 90W per port (320W total power) for deploying the latest high-powered IP devices in remote locations. It is equipped with two (2) 1Gb SFP ports to transmit data at long distances and four (4) 802.3bt compliant Ethernet ports. NetWaySP41BTB accommodates single/multi-mode fiber or composite cable (fiber+copper) to simultaneously deliver power and data from NetWay Spectrum head-end media converters/injectors.



NetWaySP41BTB

Key Features

- External 48-55V UL Listed ITE power supply required
- IEEE 802.3af, 802.3at, 802.3bt compliant
- Four (4) 10/100/1000 Mbps Ethernet ports rated at 90W each (limited to 320W total power)
- Two (2) Gigabit SFP ports
- PoE activity LED indicators
- CE European Conformity

Similar products

NetWaySP41BTWPX	Outdoor 4-port Hardened 4PPoE Switch with Integral Power in NEMA 4/4X, IP66-11 enclosure which accommodates stand-by batteries
NetWaySP41BTWP	Outdoor 4-port Hardened 4PPoE Switch with Integral Power in NEMA 4/4X, IP66-11 enclosure
NetWaySP41BTWPN	Outdoor 4-port Hardened 4PPoE Switch in NEMA 4/4X, IP66-11 enclosure
NetWaySP41BTX	Indoor 4-port Hardened 4PPoE Switch in NEMA 1 Rated indoor enclosure
NetWaySP41BTPL	4-port Hardened 4PPoE Switch with Integral Power on a Backplane

Lifetime Warranty

Specifications

Input	48V-56V (UL Listed ITE power supply)
Output	Four (4) 10/100/1000 Mbps Ethernet ports rated at 90W each (limited to 320W total power) IEEE 802.3af, 802.3at, 802.3bt compliant
SFP Ports:	Two (2) Gigabit SFP ports
Ethernet Ports:	Four (4) 10/100/1000 Mbps ports Connectivity: RJ45, auto-crossover Wire type: 4-pair CAT5e or higher structured cable Speed: 10/100/1000 Mbps, half/full duplex, auto negotiation

Indicators (LED)

Individual PoE On LEDs for each port
Individual IP Link status, 10/100/1000 Base-T/active LEDs for each port
ALOS LED indicates fiber connection for SFP port
Heartbeat LED indicates proper operation of the unit

Agency Listings

CE European Conformity

Physical and Environmental

Dimensions (L x W x H)

Board:
6.25" x 4.5" x 0.625" (158.8mm x 114.3mm x 15.9mm)
Shipping:
13" x 10" x 6" (330.2mm x 254mm x 152.4mm)

Weight (approx.)

Product: 0.4 lb. (0.18 kg)
Shipping: 0.75 lb. (0.34 kg)

Temperature

Operating:

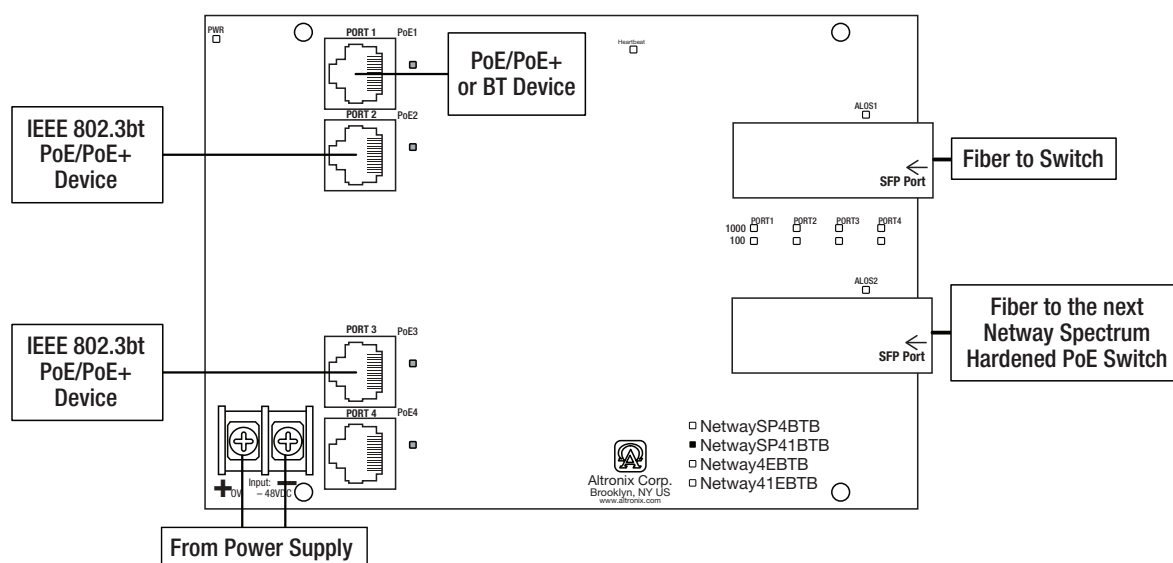
240W: -40°C to 55°C (-40°F to 131°F)
180W: -40°C to 65°C (-40°F to 149°F)
150W: -40°C to 75°C (-40°F to 167°F)
Storage: -40°C to 85°C (-40°F to 185°F)

Relative Humidity 85% +/- 5%.

Operating Altitude: -304.8 to 2,000m

Mounting hardware is included

Typical Application



Lifetime Warranty

Altronix Corporation | 140 58th St | Brooklyn, NY 11220 USA

phone: +1 718.567.8181 | fax: +1 718.567.9056 | email: info@altronix.com | www.altronix.com



NetWaySP41BTB

4-port Hardened 4PPoE (802.3bt) Switch



Power Sourcing Equipment and Accessories (order separately)



NetWaySP4PX - Ethernet to Fiber Media Converter with Integral Power Supply/Charger
4-port Ethernet to Fiber Media Converter for applications utilizing composite (power + copper) or conventional cabling
Unit provides power up to 120W per port (480W total power). Four (4) 1Gb SFP ports.



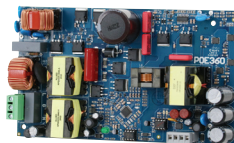
SFP Modules - Hot Pluggable Transceivers

P1MM	Multi-Mode SFP Module for distances up to 550m
P1SM10	Single-Mode SFP Module for distances up to 10km
P1AB2K	Single Strand SFP Module for distances up to 2km
P1GCE	Copper SFP Module for distances up to 100m



NetWaySP1A

Ethernet over Fiber Media Converter/Repeater for Applications Requiring an Additional SFP (Fiber) Port
NetWaySP1A PoE powered media converter/repeater converts 10/100/1000 Mbps to Fiber (1000Base-X/SX/LX).



PoE Power Supplies

POE240 - 240W Power Supply/Charger

Provides 240W for NetWay Spectrum switches.
It also features a built-in charger for Lithium Iron Phosphate or sealed lead acid batteries.

POE360/POE367 - 360W Power Supply/Charger

Provides 360W for NetWay Spectrum switches.
It also features a built-in charger for sealed lead acid or gel type batteries.

Lifetime Warranty

Altronix Corporation | 140 58th St | Brooklyn, NY 11220 USA

phone: +1 718.567.8181 | fax: +1 718.567.9056 | email: info@altronix.com | www.altronix.com



NetWaySP41BTB

4-port Hardened 4PPoE (802.3bt) Switch

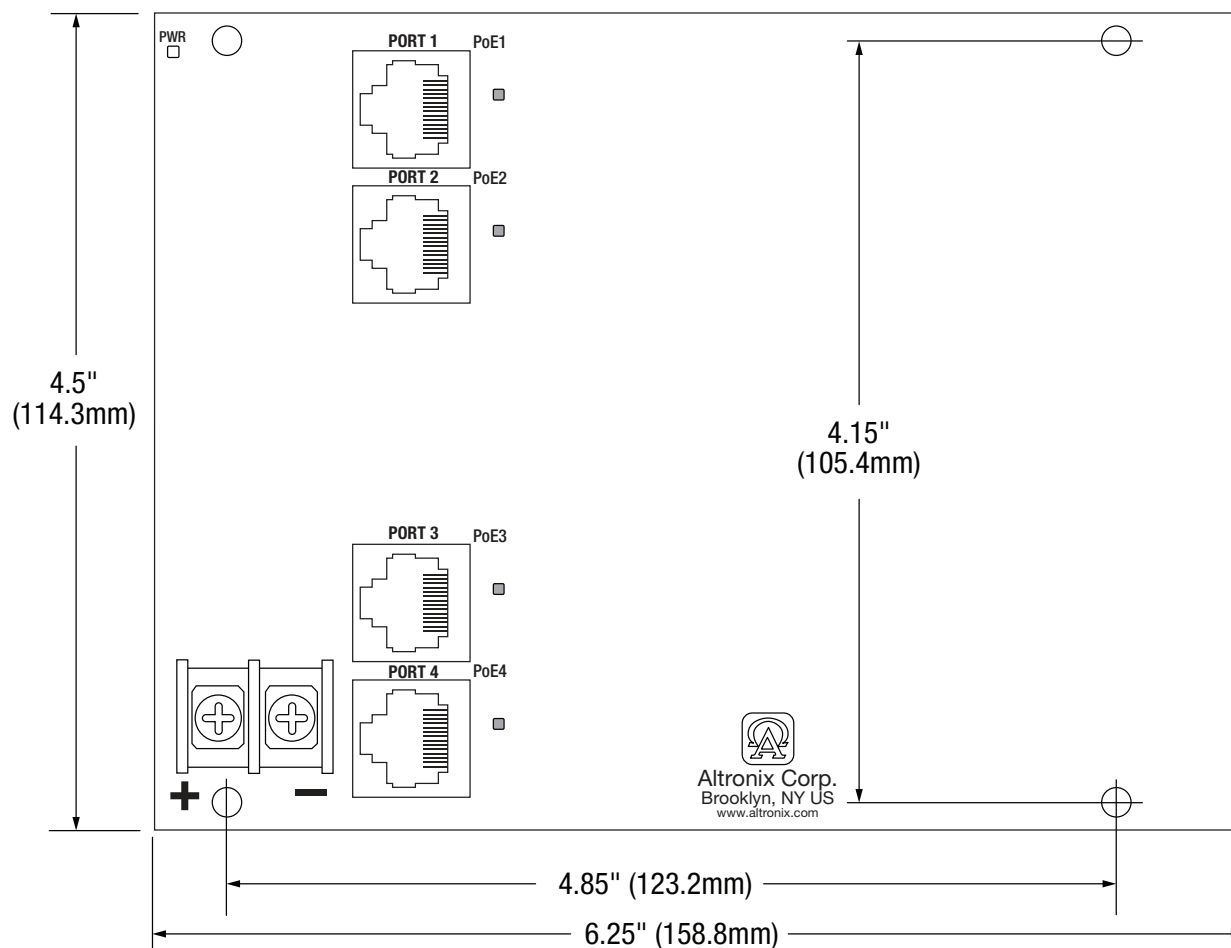


Dimensions and Drawing

Board Dimensions (L x W x H approximate)

6.25" x 4.5" x 0.625" (158.8mm x 114.3mm x 15.9mm)

Mounting Holes' Tolerance: +/- 0.04 in. (1mm)



Lifetime Warranty

Altronix Corporation | 140 58th St | Brooklyn, NY 11220 USA

phone: +1 718.567.8181 | fax: +1 718.567.9056 | email: info@altronix.com | www.altronix.com