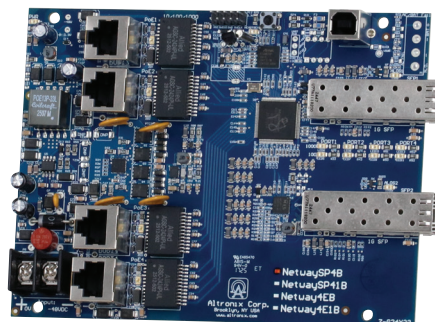


NetWaySP4B

4-port Hardened PoE Switch Board

Altronix NetWaySP4B PoE+ Switch board provides two (2) 1Gb SFP (Fiber) ports and four (4) PoE+ (30W) ports. Cameras/edge devices may be located up to 100m from the unit. Embedded LINQ Technology allows you to monitor, control, and report power and diagnostics from anywhere.

For unmanaged switch see model NetWaySP41B.



NetWaySP4B

Key Features

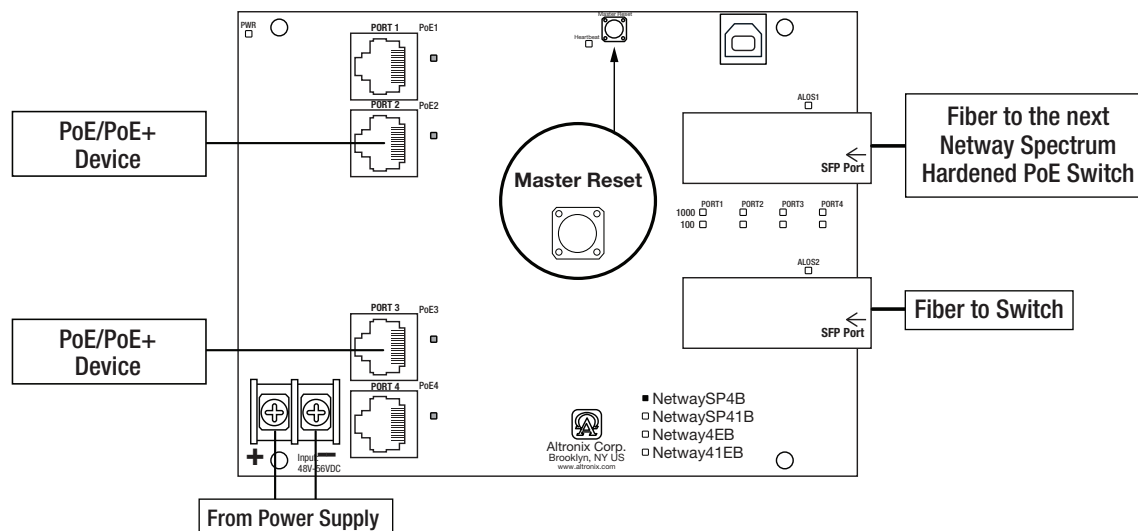
- Two (2) Gigabit SFP ports
- 120W total power
- Four (4) PoE/PoE+ (up to 30W) ports
- Four (4) 10/100/1000 Mbps ports
- IEEE 802.3at (30W), IEEE 802.3af (15W) compliant
- PoE activity LED indicators
- VLAN (Virtual Local Area Networks) subnetwork allows for the grouping together of devices for improved network traffic and higher security
- Mounting hardware is included
- UL Listed in the U.S. and Canada
- CE European Conformity
- Lifetime Warranty

Similar products

NetWaySP4WPX	Outdoor 4-port PoE+ Hardened Switch in NEMA 4/4X, IP66-11 enclosure which accommodates stand-by batteries
NetWaySP4WP	Outdoor 4-port PoE+ Hardened Switch in NEMA 4/4X, IP66-11 enclosure
NetWaySP4WPN	Outdoor 4-port PoE+ Hardened Switch only in NEMA 4/4X, IP66-11 enclosure
NetWaySP4X	Indoor 4-port PoE+ Hardened Switch in NEMA 1 Rated indoor enclosure
NetWaySP4PL	4-port PoE+ Hardened Switch with Integral Power on a Backplane

Lifetime Warranty

Typical Application



Specifications

Input

Voltage 48V-56V (UL Listed ITE power supply)

Power Output

Maximum Power Four (4) PoE+ (30W) ports
IEEE 802.3at (30W) and
IEEE 802.3af (15W) compliant
120W total power
Integral surge protection

Fiber Ports: Two (2) Gigabit SFP ports

Ethernet Ports: Four (4) 10/100/1000 Mbps ports
Connectivity: RJ45, auto-crossover
Wire type: 4-pair CAT5 or better structured cable
Distance: up to 100m
Speed: 10/100/1000 Mbps,
half/full duplex, auto negotiation

Indicators (LED)

Individual PoE On LEDs for each port
Individual IP Link status, 10/100Base-T/active LEDs for each port
ALOS LED indicates fiber connection for SFP port
Heartbeat LED indicates proper operation of the unit

LINQ Technology:

Remote network management allows for camera/device reset and monitoring
Provides local and/or remote access to critical information via LAN/WAN
Email and Windows Dashboard Alert notifications report real-time diagnostics
Event log tracks history

VLAN:

Multiple management VLAN assignment
802.1Q Tagged VLAN
Up to 10 VLAN groups. ID Range 2-4095

Agency Listings

UL/cUL UL60950-1 (Information Technology Equipment)
UL60950-22 (Information Technology
Equipment to be installed Outdoors)
CE European Conformity

Physical and Environmental

Dimensions (L x W x H)

Board: 6.25" x 4.5" x 0.625" (158.8mm x 114.3mm x 15.9mm)
Shipping: 13" x 10" x 6" (330.2mm x 254mm x 152.4mm)

Weight (approx.)

Product: 0.4 lb. (0.18 kg)
Shipping: 0.75 lb. (0.34 kg)

Temperature

Operating: 60W: -40°C to 75°C (-40°F to 167°F)
75W: -40°C to 70°C (-40°F to 158°F)
100W: -40°C to 55°C (-40°F to 131°F)
120W: -40°C to 45°C (-40°F to 113°F)
Storage: -40°C to 85°C (-40°F to 185°F)

Relative Humidity: 85% +/- 5%

Operating Altitude: -304.8 to 2,000m

Mounting hardware is included

Lifetime Warranty

Altronix Corporation | 140 58th St | Brooklyn, NY 11220 USA

phone: +1 718.567.8181 | fax: +1 718.567.9056 | email: info@altronix.com | www.altronix.com

NetWaySP4B

4-port Hardened PoE Switch Board



Power Sourcing Equipment and Accessories (order separately)



4-port Ethernet over Fiber Media Converters for Applications Utilizing Composite or Conventional Cabling

NetWaySP4 Unit passes a maximum power up to 120W per port (240W total power) from a Power Supply or Midspan Injector. Four (4) 1Gb SFP ports.

NetWaySP4P Unit provides a maximum power up to 120W per port (240W total power) from a built-in Power Supply/ Charger. Four (4) 1Gb SFP ports.

NetWaySP4P2 Unit provides 56VDC power-limited 60W max. per port (240W total power) from a built-in Power Supply/Charger. Four (4) 1Gb SFP ports.



SFP Modules - Hot Pluggable Transceivers

P1MM Multi-Mode SFP Module for distances up to 550m

P1SM10 Single-Mode SFP Module for distances up to 10km

P1AB2K Single Strand SFP Module for distances up to 2km

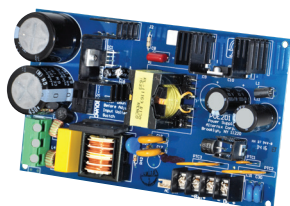
P1GCE Copper SFP Module for distances up to 100m



NetWaySP1A

Ethernet over Fiber Media Converter/Repeater for Applications Requiring an Additional SFP (Fiber) Port

NetWaySP1A PoE powered media converter/repeater converts 10/100/1000 Mbps to Fiber (1000Base-X/SX/LX).



PoE Power Supplies

POE60 - 75W Power Supply/Lithium Iron Phosphate Charger

Provides 75W for NetWay Spectrum switches.

It also features a built-in charger for Lithium Iron Phosphate batteries.

POE201 - 120W Power Supply/Charger

Provides 120W for NetWay Spectrum switches.

It also features a built-in charger for sealed lead acid or gel type batteries.

Lifetime Warranty

Altronix Corporation | 140 58th St | Brooklyn, NY 11220 USA

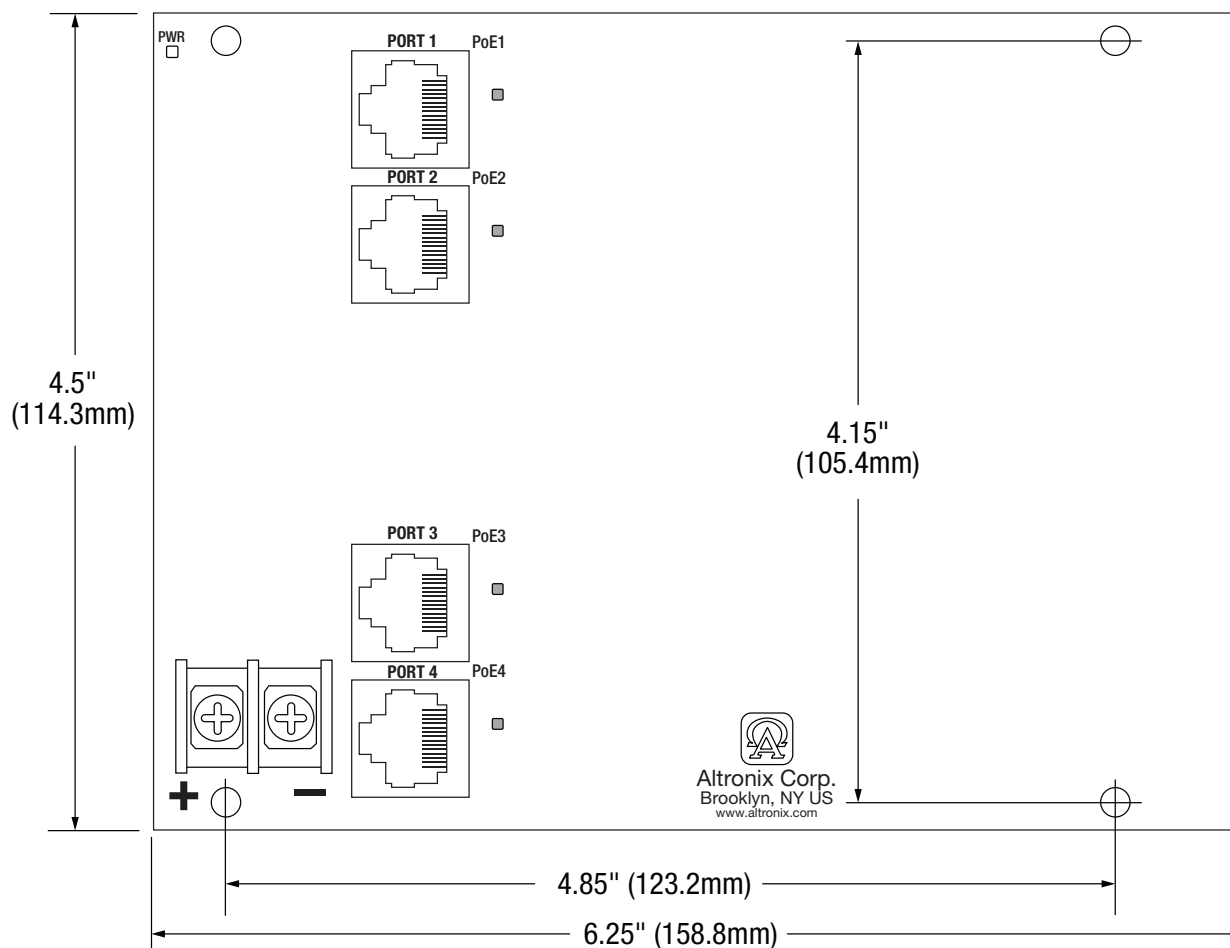
phone: +1 718.567.8181 | fax: +1 718.567.9056 | email: info@altronix.com | www.altronix.com

Dimensions and Drawing

Board Dimensions (L x W x H approximate)

6.25" x 4.5" x 0.625" (158.8mm x 114.3mm x 15.9mm)

Mounting Holes' Tolerance: +/- 0.04 in. (1mm)



Lifetime Warranty

Altronix Corporation | 140 58th St | Brooklyn, NY 11220 USA

phone: +1 718.567.8181 | fax: +1 718.567.9056 | email: info@altronix.com | www.altronix.com