

## Pace1KR

### Long Range Single Pair (UTP) Ethernet Media Adapter/Receiver



Altronix Pace1KR is a long-range Ethernet adapter that transmits data and power via twisted pair (2-wire, UTP or shielded) in a PoE(+) compliant format. In addition to new SPE (UTP) Ethernet network installations for Surveillance-cameras/Security/Industrial/BMS/HVAC & Elevator Controllers, applications include upgrading of legacy networks, i.e. LONworks, RS485, 4-20ma Control Loops, etc. by using the existing two wire cabling, thus saving rip-out & reinstallation costs.

Operationally, the Pace1KR is connected to a PoE midspan/endspan switch at the headend and passes network data and power to the Pace transceiver (see List of Compatible Altronix Transceivers, pg. 4) from the switch via UTP up to 1km (1,000m, 3,280 ft.) to a remote 10 PoE device, such as a camera. For non-PoE remote devices, data only is transmitted.



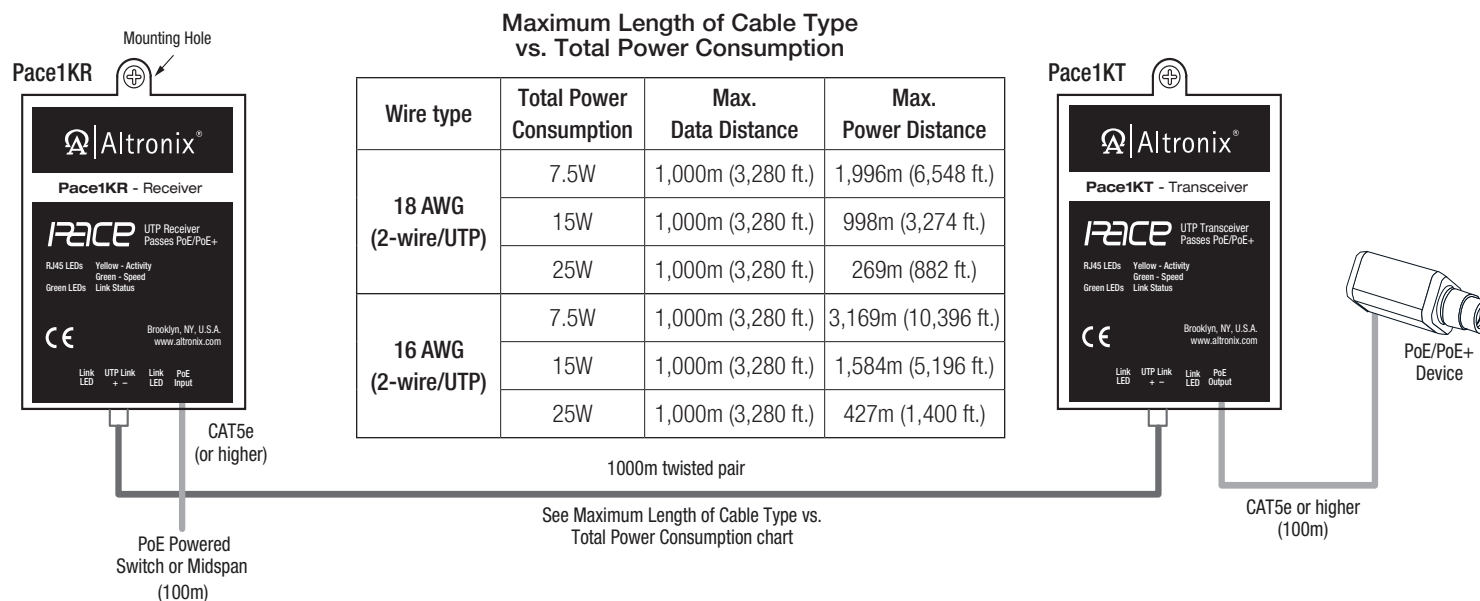
Pace1KR

### Key Features

- Provides SPE (single pair Ethernet) over twisted pair (2-wire, UTP or shielded) or 16/2 AWG or higher wire up to 1km (1,000m, 3,280 ft.)
- Utilize twisted pair for new installations or retrofit of IP devices over existing twisted pair cabling
- Cost-effective solution to facilitate IP devices that need to be installed at longer distances such as in elevator shafts, tunnels, bridges, HVAC, and more...
- PoE, IEEE 802.3af (15W) and IEEE 802.3at (25W) compliant
- Auto detection allows it to safely work with non-PoE cameras/devices
- Works with Megapixel, HD720, HD1080 & VGA (SD) cameras
- Extends Network link distance in an industrial environment
- Building Automation, Elevator Systems, HVAC, Lighting, Surveillance & Security
- Utilize twisted pair for new installations or retrofit of IP devices over existing twisted pair cabling
- Compatible with Pace1KT, Pace2KT, Pace1KL12S, Pace1KL24S receivers
- CE European Conformity
- Lifetime Warranty

### Typical Application Diagram

*Pace1KT is shown. Applications are similar with other Pace Transceivers.*



### Lifetime Warranty

Altronix Corporation | 140 58th St | Brooklyn, NY 11220 USA

phone: +1 718.567.8181 | fax: +1 718.567.9056 | email: info@altronix.com | www.altronix.com

## Specifications

### Input

Powered by midspan or endspan  
PoE compliant to IEEE 802.3af (15W) and  
PoE+ compliant to IEEE 802.3at (25W)

### UTP Connection

Wire type: Twisted pair (2-wire, UTP or shielded)

Distance: 1km (1,000m, 3,280 ft.),  
16/2 AWG or higher @ 10Mbps

(see Maximum Length of Cable Type vs. Total Power  
Consumption chart on pg. 1)

### Ethernet Connection

Connectivity: RJ45, auto-crossover

Wire type: 4-pair, CAT5e or higher

Distance: up to 100m from midspan to Pace1KR receiver  
(headend), 100m from Pace transceiver to device

Speed: 10BaseT, half/full duplex, auto negotiation.

PoE: IEEE 802.3af (15W) and PoE+ compliant to IEEE 802.3at  
(25W) delivered to device by Pace1KR Power provided by  
Pace1KR to Pace transceiver by PoE protocol

### Indicators (LED)

Green LED (left): PoE (link)

Green LED (right): Data transmission (link)

Yellow and Green LED (by RJ45 jack):  
IP Link status, 10Base-T/active

### Agency Listings

CE

European Conformity

### Physical and Environmental

#### Dimensions (W x L x H)

Enclosure: 2.5" x 3.8" x 1" (63.5mm x 96.5mm x 25.4mm)

Shipping: 8" x 6" x 5" (203.2mm x 152.4mm x 127mm)

#### Weight (approx.)

Product: 0.22 lb. (0.1 kg)

Shipping: 0.4 lb. (0.18 kg)

#### Temperature

Operating: - 40°C to 75°C (- 40° to 167°F)

Storage: - 40°C to 75°C (- 40° to 167°F)

#### Relative Humidity

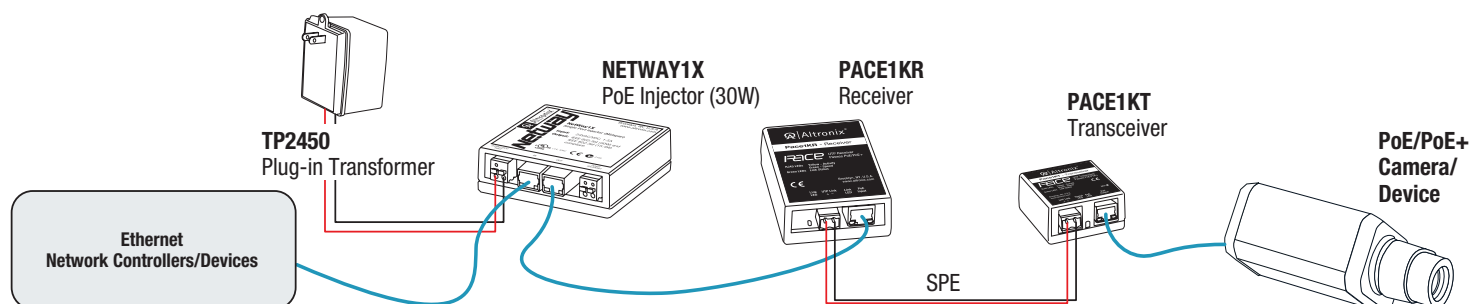
85% +/- 5%

#### Operating Altitude

- 304.8 to 2,000m

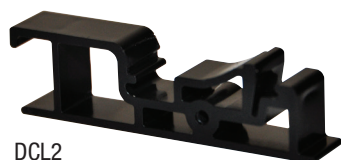
## Typical Operation Diagram

### Multi-point SPE Application utilizing Altronix PoE Injector and PoE Splitter(s)



For dual port connectivity please see kit model: Pace2KRT

## Accessories



### DCL2 - DIN Rail Mounting Clip

Allows for easy installation of Altronix adapters utilizing screw mounting holes to mount on a standard DIN rail (Altronix Din Rail models D10, D12, D19, or D24).

### Lifetime Warranty

Altronix Corporation | 140 58th St | Brooklyn, NY 11220 USA

phone: +1 718.567.8181 | fax: +1 718.567.9056 | email: info@altronix.com | www.altronix.com